



3,315 SF - FURNISHED

**NOW AVAILABLE
FOR SUBLEASE**

**650 DUNDEE ROAD
SUITE 390
NORTHBROOK, IL**

OPPORTUNITY HIGHLIGHTS

Short Term
Sublease

Through January 31, 2023

Available
Immediately

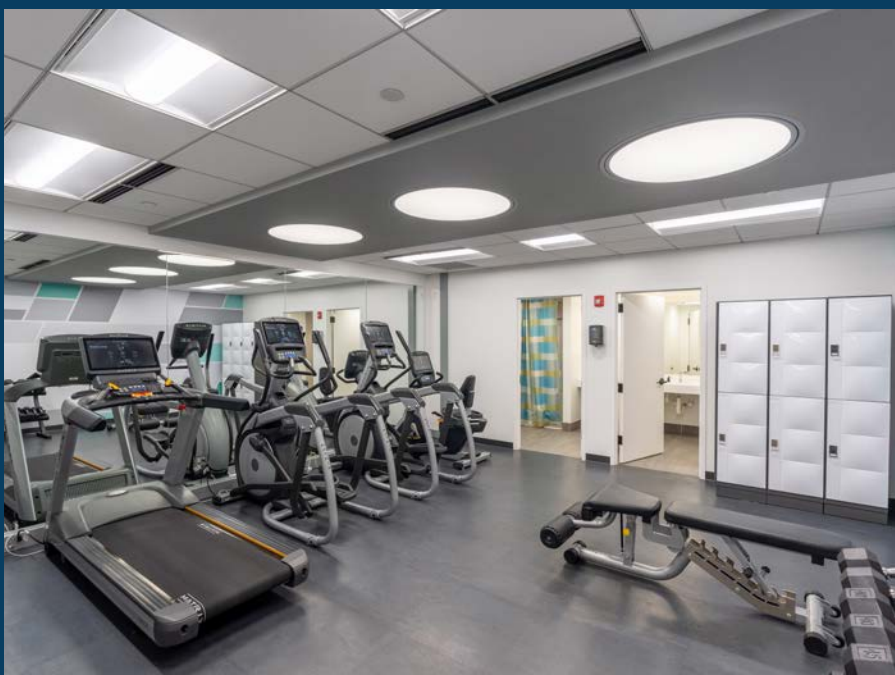
Move-in ready

Plug-n-Play
Space

Fully furnished

Full Suite of Amenities

Edens Corporate Center offers a robust suite of building amenities including a fitness center, full service deli, outdoor seating, bicycle storage, conferencing, and more!



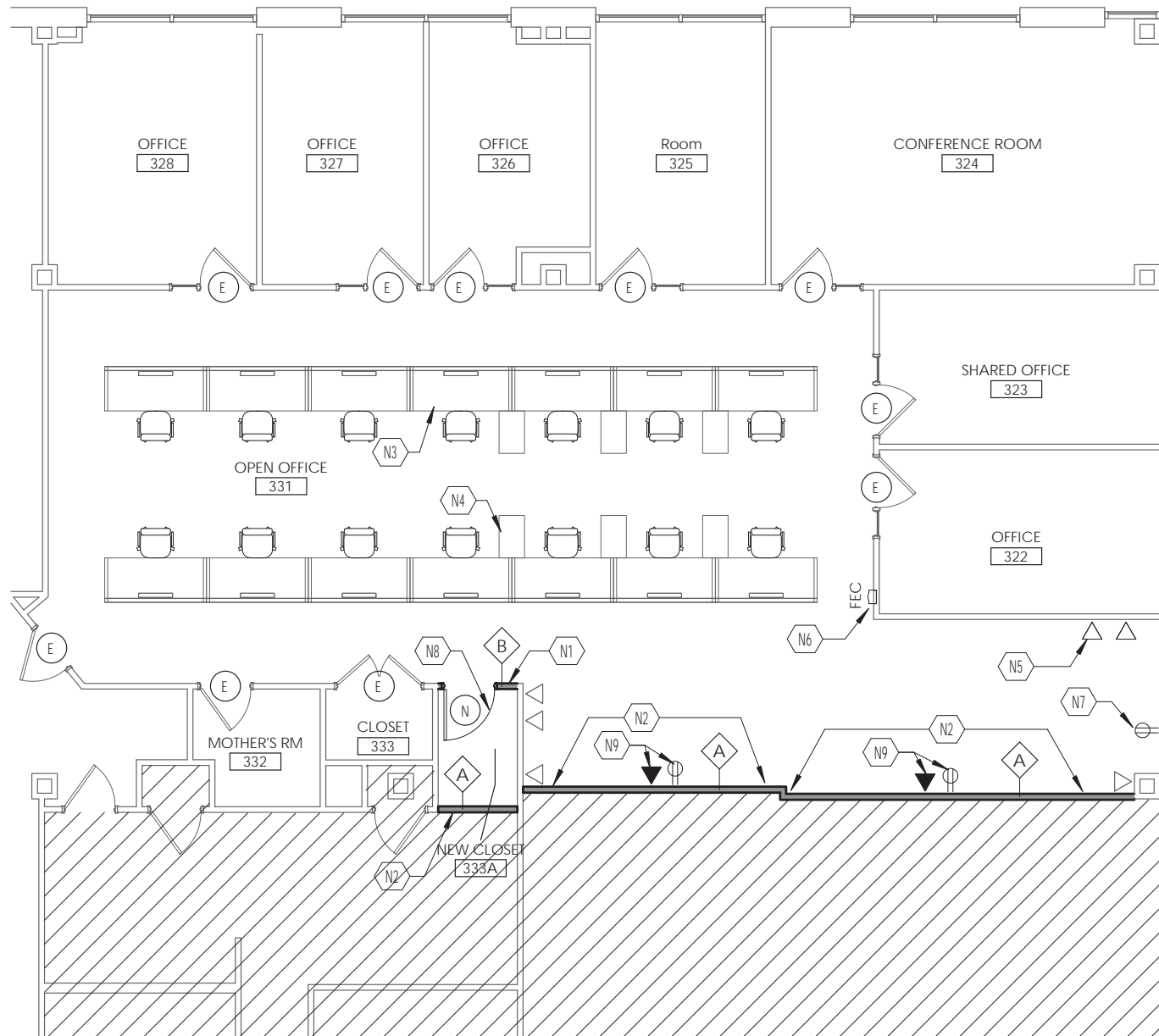
6 PRIVATE OFFICES

14 WORKSTATIONS

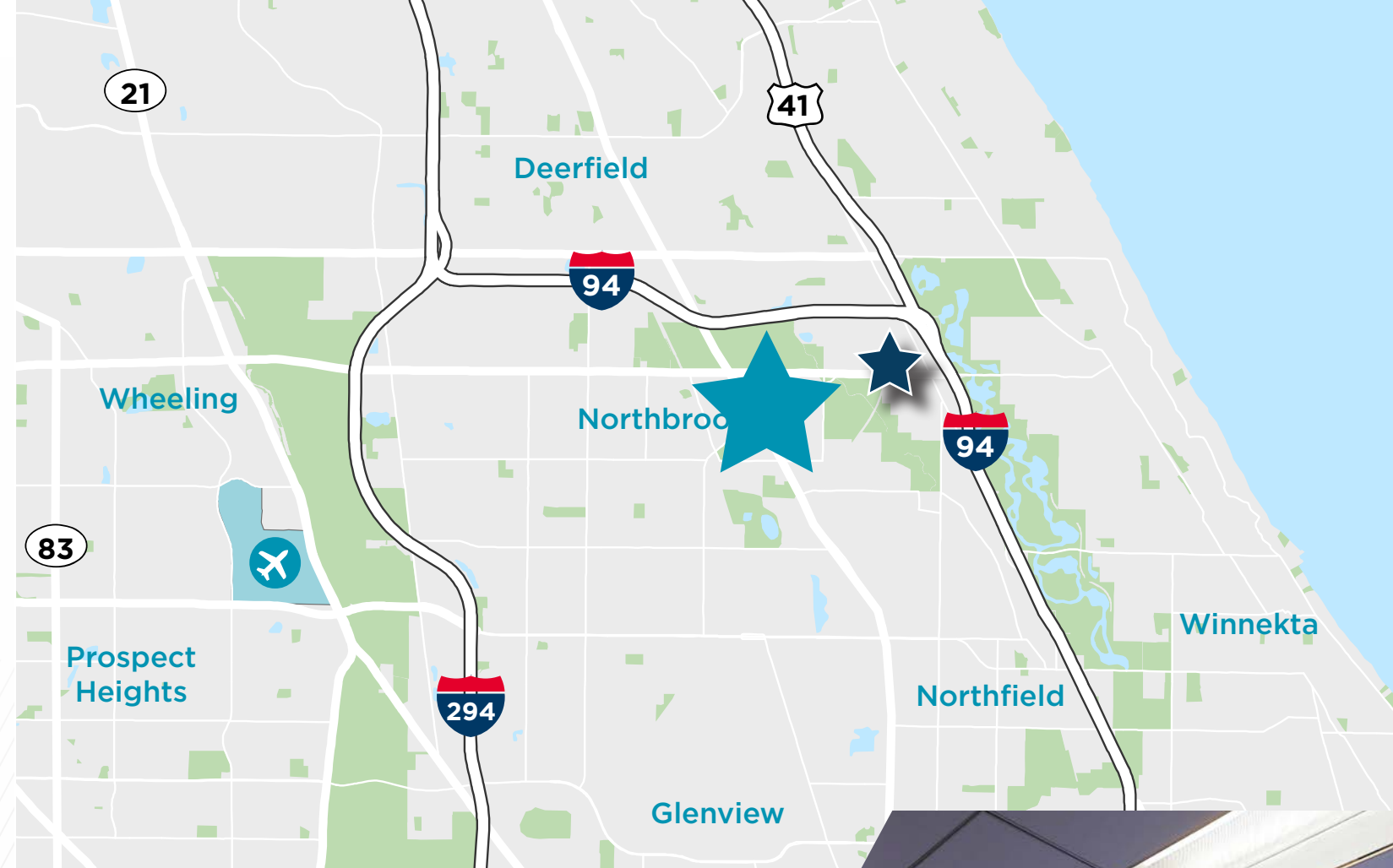


AVAILABLE FOR SUBLEASE

Suite 390 - 3,315 RSF



CLICK [HERE](#) TO VIEW 3D TOUR

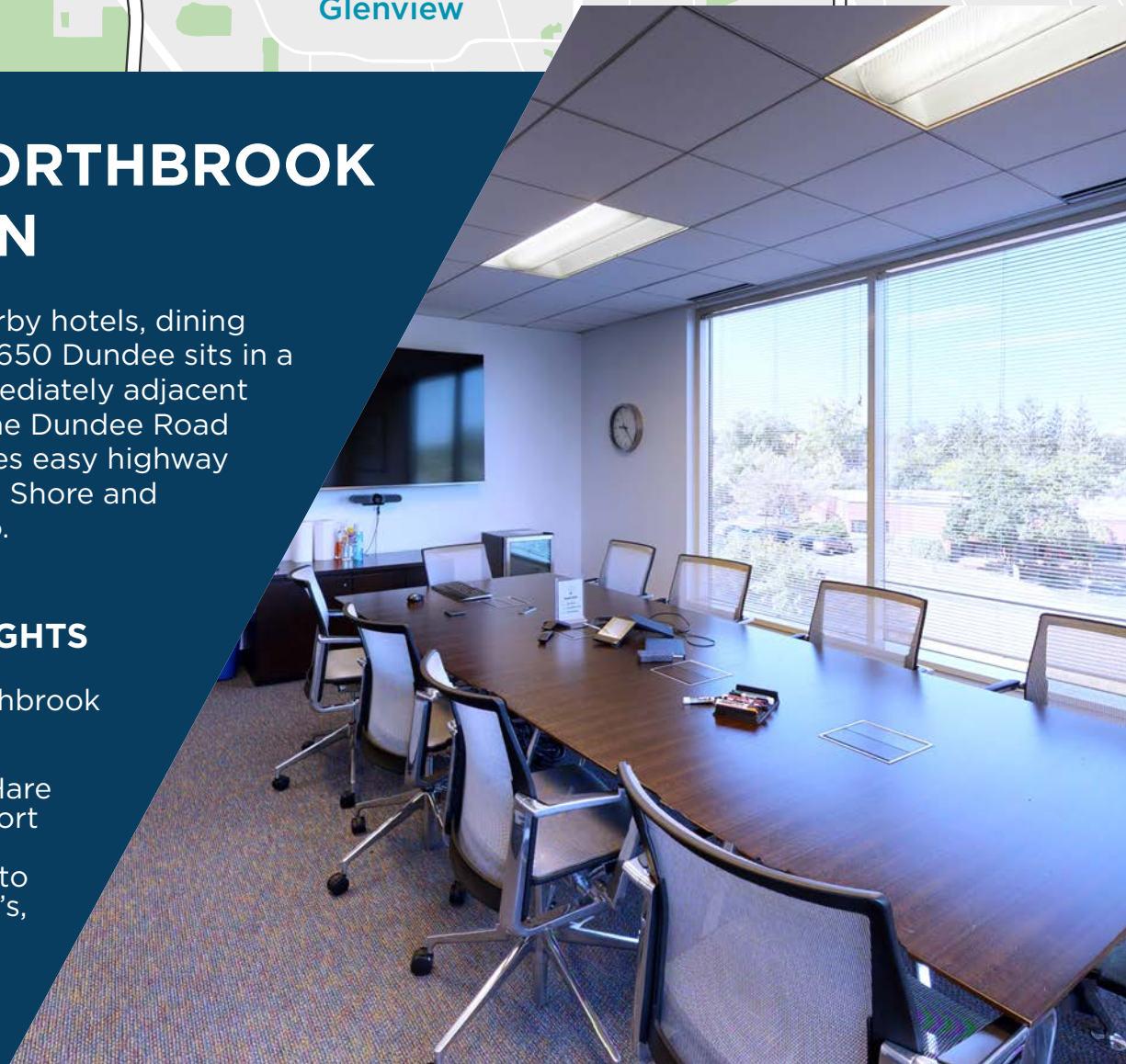


PRIME NORTHBROOK LOCATION

With countless nearby hotels, dining options, and retail, 650 Dundee sits in a prime location immediately adjacent to Interstate 94. The Dundee Road interchange provides easy highway access to the North Shore and Downtown Chicago.

ACCESS HIGHLIGHTS

- 5 minutes to Northbrook Court Mall
- 20 minutes to O'Hare International Airport
- Walking distance to Mariano's, Morton's, Panera Bread, Chipotle



CONTACT

CHRIS CUMMINS
Executive Director
+1 847 518 3238
chris.cummins@cushwake.com

©2020 Cushman & Wakefield. All rights reserved. The material in this presentation has been prepared solely for information purposes, and is strictly confidential. Any disclosure, use, copying or circulation of this presentation (or the information contained within it) is strictly prohibited, unless you have obtained Cushman & Wakefield's prior written consent. The views expressed in this presentation are the views of the author and do not necessarily reflect the views of Cushman & Wakefield. Neither this presentation nor any part of it shall form the basis of, or be relied upon in connection with any offer, or act as an inducement to enter into any contract or commitment whatsoever. NO REPRESENTATION OR WARRANTY IS GIVEN, EXPRESS OR IMPLIED, AS TO THE ACCURACY OF THE INFORMATION CONTAINED WITHIN THIS PRESENTATION, AND CUSHMAN & WAKEFIELD IS UNDER NO OBLIGATION TO SUBSEQUENTLY CORRECT IT IN THE EVENT OF ERRORS.

